

A ROCHA
GHANA



Annual Report

2023



01 About the Organisation 02

A Rocha Ghana Profile 03

Message from Board Chairman 06

Message from National Director 07

List of Board Members 08

Meet Our Team 10

02 Projects 12

02.1 Lake Bosomtwe Landscape 14

02.2 Atewa Forest Landscape 18

02.3 Mole Ecological Landscape 24

02.4 Mangrove Landscapes 30

03 Other Interventions 32

03.1 Corporate Engagement 34

03.2 Creation Care and Interfaith Interventions 36

03.3 Environmental Education 40

03.4 Environmental Commemorative Days 42

04 Major Publications 44

05 Biggest and Longest Campaign 46

06 Success Stories 48

07 Connecting With The Rest Of The World 50

08 Metrics 52

09 Partners 54

01

About the Organisation

A Rocha Ghana Profile

Established in 1999 as the Eden Conservation Society, A Rocha Ghana (ARG) has a long and proud history as a committed environmental NGO providing practical conservation interventions towards the sustainable management of important ecological habitats.

In 2003, we officially became part of the A Rocha family.

As a conservation-oriented organization and part of A Rocha network of organizations working to show God's love for creation, our core values align with the network's five core values:



Conservation

We carry out research for the conservation and restoration of the natural world and run environmental education programs for people of all ages.



Christian

Underlying all we do is our biblical faith in the living God, who made the world, loved it and entrusted it to the care of humankind.



Community

Through our commitment to God, each other and the wider creation, we aim to develop good relationships both within the A Rocha family and in our local communities.



Cross-Cultural

We draw on the insights and skills of people from diverse cultures, both locally and around the world.



Cooperation

We work in collaboration with a wide variety of organizations and individuals who share our concerns for a sustainable world.

1 2 3 4 5



Our Vision

Together caring for
God's creation always



Mission

To contribute to the effective management of the Earth's
resources through sustainable and innovative actions.



What we stand for

A Rocha Ghana recognizes the inextricable link between modern man and the survival of the Earth's flora and fauna. To put this into action, we work to inspire and empower people to care for nature through advocacy, livelihood improvement, sustainable natural resource management, and inter-faith dialogue that hinges on research and education.

Our strategic goal focuses on utilizing and adapting proven technologies in biodiversity conservation, landscape management and climate change mitigation and adaptation. We are also committed to developing our own institutional capacity.

Our work



With four (4) offices spread across the southern and northern parts of Ghana, we collaborate with communities to implement interventions that benefit both people and the environment.

ARG is currently resident in three different landscapes;

1. Mole Ecological Landscape, (Savannah, North East and Upper West Regions)
2. Lake Bosomtwe Landscape, Ashanti Region
3. Atewa Forest Landscape, Eastern Region

We have a non-resident engagement work in the Muni-Pomadze Ramsar Site in the Central Region and the Keta Lagoon Complex Ramsar Site, Volta Region, focusing on coastal resource management and mangrove restoration.

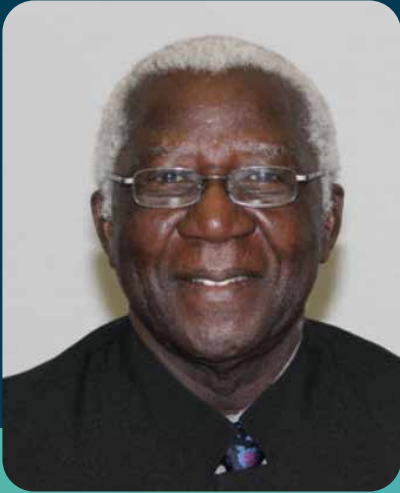
In all these landscapes, we provide practical conservation interventions through community natural resource governance for sustainable landscape management, conservation of ecosystems, and green livelihood and business development. Recognising the growing challenge that communities face from climate change, we also support them to build resilience to its impacts and to other environmental threats.

Besides our work with local communities, we also work at the national level in various ways. We engage state and non-state actors on the critical need to integrate ecosystem services into Ghana's development processes at all levels. As an organization committed to upholding international best practices in environmental sustainability and development, we also contribute to Ghana's ability to achieve transformational change through the United Nations (UN) Sustainable Development Goals (SDGs), working with partners directly on SDGs 1, 3, 5, 6, 7, 11, 12, 13, 15, and 17, among others.

At the heart of all our engagements is our commitment to support and work with youth groups in communities and schools. We therefore run one of the most comprehensive networks of schools' programs across the country, working to care for creation and building leaders with a mindset for sustainability.

Partnerships

ARG is a member of the International Union for the Conservation of Nature (IUCN) and the International Partnership for the Satoyama Initiative (IPSI). We are also a member of the Global Shea Alliance (GSA) and a proud member of the GSA's sustainability working group. Our affiliations further extend to the Ecosystem Services Partnership as well as to the Lausanne Movement. In 2022 we also became a Network Partner of the Private Financing Advisory Network (PFAN) hosted by the UN Industrial Development Organisation (UNIDO) and joined the Business for Nature (BfN) coalition promoting sustainable development and transformational change in the way businesses deal with nature.



Message from Board Chairman

Prof. Alfred Oteng-Yeboah

A number of global issues have been of concern over the last few months, for which I was fully involved, in part as a government delegate and also as the Chair of A Rocha Ghana (ARG) Board. I refer to the conclusion of the Kunming-Montreal Global Biodiversity Framework (K-MGBF), and the International Partnership for Satoyama Initiative (IPSI). The K-MGBF meeting held in Montreal as the 15th Conference of Parties (COP) of the UN Convention on Biological Diversity (CBD), made it possible for Parties to the Convention to make decisions on how to approach the 2030 agenda on Biodiversity. One of the decisions was the establishment of an ad-hoc Technical Expert Group on Indicators (AHTEG) whose membership included me. The IPSI Steering Committee meeting was the ninth and it was held in the city of Akita in Japan. This was chaired by me and many new ideas emerged on how to continue the relation with the biodiversity-related agreements to promote productive landscapes and seascapes as the basis for other effective area-based conservation measures (OECM) to support Target 3 of the K-MGBF. On the A Rocha international front, my tenure on the Trusteeship Board was renewed by the African

A Rocha Organisations (AROs). They unanimously approved my position for another period of 2-3 years.

At the national level, issues concerning the further development of the Ghana National Biodiversity Policy and the National Biodiversity Strategic and Action Plan (NBSAP). These functions were fully discharged.

Under the watch of the Board of ARG, there is evidence of the leadership roles played by ARG for and on behalf of CSOs in Ghana. ARG's understanding of the scale of destruction of the environment has propelled us to be the de facto mouthpiece of the group. Any actions conceived by ARG are agreed upon and taken up by the rest of the group. This is a huge credit that must be appreciated.

ARG has chalked several successes in terms of advocacy and implementation of programmes. This trend in advocating for the people in terms of their resource rights and the successful implementation of projects have become the strengths of ARG. There is the desire that this momentum will continue into the future.



ARG's understanding of the scale of destruction of the environment has propelled us to be the de facto mouthpiece of the group.

Message from National Director

Dr. Seth Ken Appiah-Kubi



In November 2019, we celebrated our 20th anniversary as an environmental conservation NGO, then marking two decades of dedicated efforts towards preserving our planet's biodiversity and promoting sustainable practices. Three years on, this milestone still provides us an opportunity for deep reflection on our journey, the challenges overcome, and the remarkable achievements we have accomplished together.

Over the years, not only have we evolved into a prominent force for environmental conservation, renowned for our impactful projects and unwavering commitment to sustainable solutions, but we have also encountered numerous hurdles and witnessed locally, the ever-growing urgency of the global environmental crisis. From battling deforestation and habitat loss to confronting climate change and pollution.

Yet, despite these uphill challenges, we have achieved significant success. Our conservation initiatives and relentless advocacy have resulted in the preservation of vast tracts of critical habitats, providing refuge for endangered species, fostering the recovering of fragile ecosystem, encouraging responsible stewardship of our natural resources, securing water sources for

communities and urban population and improving livelihoods of communities whose lives depend on them.

The coming years hold significant opportunities for us to make a lasting impact on the environment and raise awareness about the urgent need for change. Our role as A Rocha Ghana is to advocate for environmental protection, drive policy changes, and rally communities to take action. By collaborating with like-minded organisations, partnering with government bodies, engaging with individuals at local and international level, we can together establish sustainable solutions for a green future.

I am truly and deeply appreciative of the collective efforts of our staff. It is because of your dedication, passion and unrelenting drive to overcome the obstacles that we faced, that have given us the success we have achieved.

I am hopeful that through our collective efforts, we can overcome the challenges that lie ahead and create a world where nature thrives, communities flourish, and future generations can enjoy a sustainable planet.

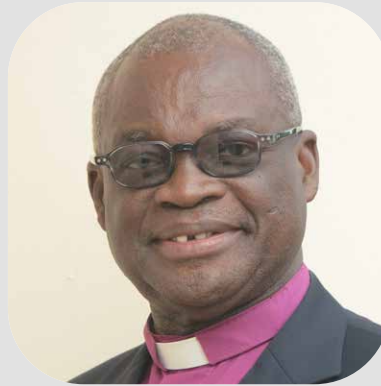


Our role as A Rocha Ghana is to advocate for environmental protection, drive policy changes, and rally communities to take action.

Board of



Prof. Alfred Oteng-Yeboah
(Chairman)



Rev. Dr. Aboagye-Mensah
(Vice Chairman)



Mrs. Yvonne Attakorah Obuobisa
(Secretary)



Rev. Fitzgerald Odonkor
(Member)



Prof. William Oduro
(Member)



Dr. Peter Donald Puplampu

Trustees



Mr. Mark Ofori-Kwafo
(Treasurer)



Dr. Moses Kofi Sam
(Conservation Science
Advisor)



Mr. Michael Mensah
(Member)



Mrs. Yacoba Esther Amuah



Dr. Seth Ken Appiah-Kubi
(National Director)

Meet Our Team



Prosper Bosiako Antwi
Lake Bosomtwe Landscape
Manager



Michael Ochem
Project Officer



Godwin Evenyo
Dzekoto
Mole Ecological Landscape
Manager



Dr. Helen La Trobe
Senior Policy and Fundraising
Officer



Seidu Pasor
Livelihood Support Officer



Rita Tikaha
Community Liaison Officer
(MEL)



Eli Etsra
Atewa Landscape Manager



Zenobia Sena Beli
Corporate Engagement
Officer



Happy Anafo
Front Desk Officer



Ransford Agyei
Conservation & Research
Dev. Officer

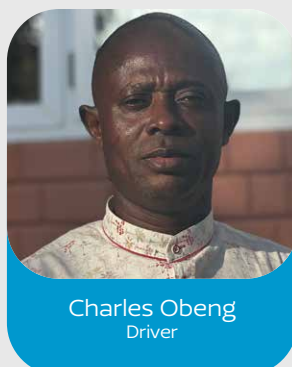
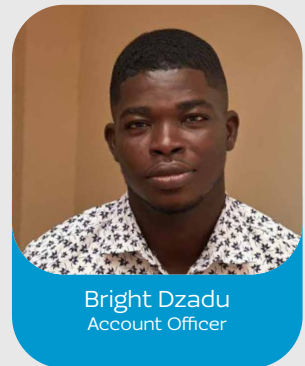
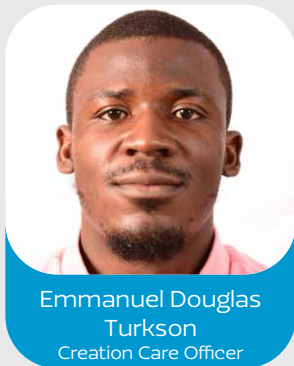
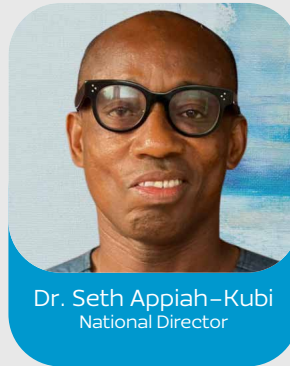


Charles Yaw Agyakwa
Project Officer, Atewa
Landscape



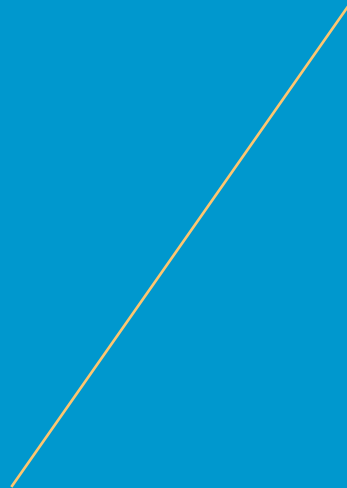
Jacqueline Mbawine
Monitoring, Evaluation &
Reporting Manager

am





02





Projects

02.1

Lake Bosomtwe Landscape

This Landscape is home to the Lake Bosomtwe—a meteoric crater lake located in the Bosomtwe District in the Ashanti Region of Ghana. It is the only Endorheic (closed) lake in Ghana.

The lake basin and its catchment provide an example of a lake ecosystem with a unique blend of species and habitats including wetland, forested catchment, marshes and grassy ridges. The area is of high national and global biodiversity significance with a high degree of endemism.

A Rocha Ghana is working in this landscape to help with the continuous protection of the area.

Here are some of the projects we pursued in 2022 in the Lake Bosomtwe Landscape.



GCCA+ Project, European Union through Expertise France and ECOWAS

Project Title: Securing Climate Change Resilience and Mitigation by Building Self-Reliant Smallholder Farmers Within the Lake Bosumtwe Landscape

Funded under the Global Climate Change Alliance Plus (GCCA+) programme, the project is supporting farmers in the Lake Bosumtwe Landscape to become self-reliant in securing climate change resilience and mitigation. Farmers have been trained in Participatory Integrated Climate Services for Agriculture (PICSA) and a range of organic and climate adaptation techniques to help them cope with the impacts of climate change.






Climate Stewards School Conservation Education Outreach Programme

In 2022, A Rocha Ghana with its Tertiary Student wing—A Rocha KNUST, organized a series of conservation education and awareness raising programmes within the lake catchment. The education programme aims to encourage youth to make decisions that contribute to the sustainable management and protection of Lake Bosomtwe as well as its forests and natural resources.

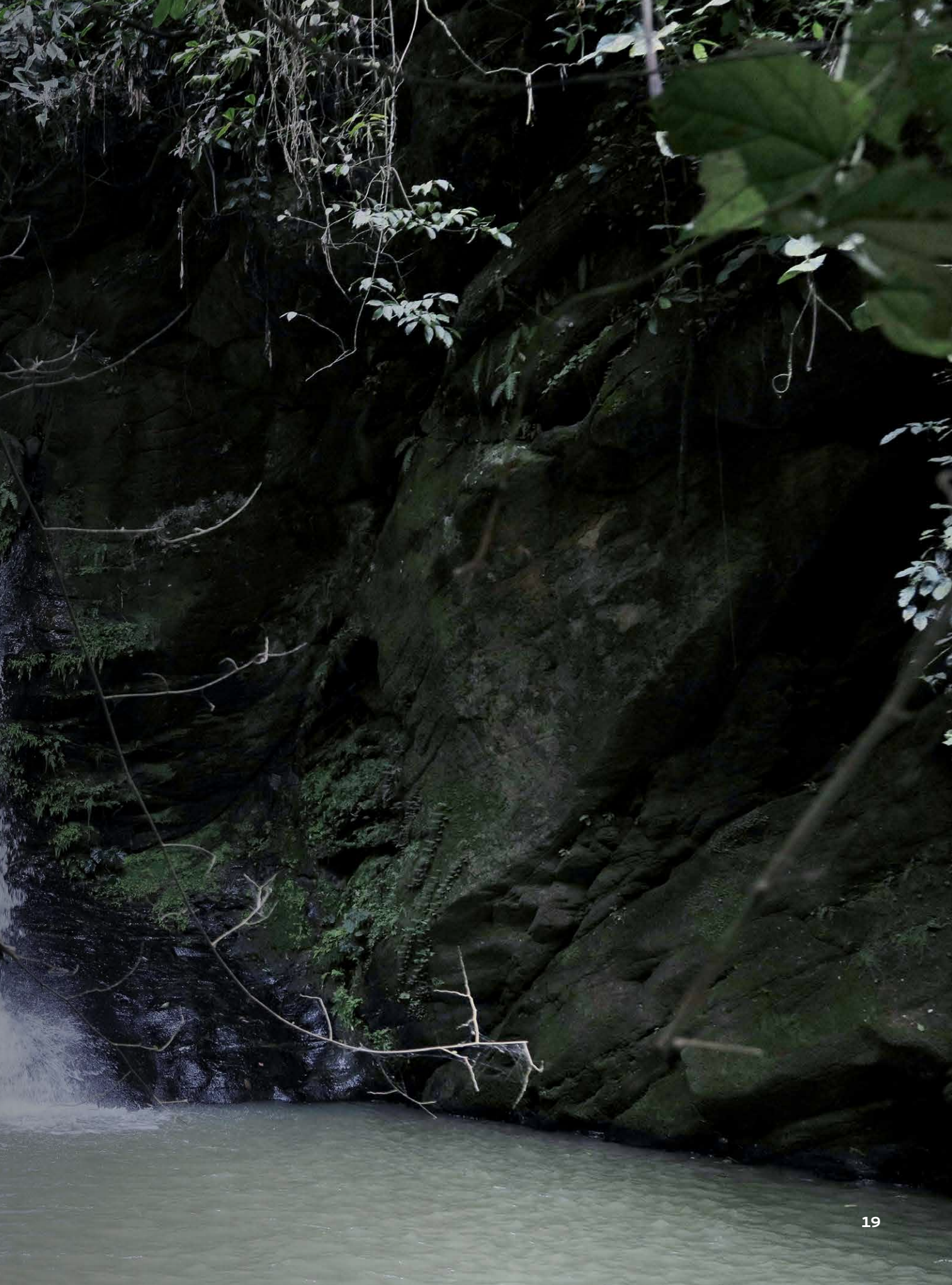
02.2



Atewa Forest Landscape

We have worked in the Atewa Forest Landscape for close to 10 years—working to secure the Atewa Range Forest Reserve. This area is a unique highly biodiverse upland evergreen forest providing habitats for many endemic and endangered species, and critical ecosystem services like clean water and climate change resilience. ARG has supported the over 50 communities dotted around the forest with various livelihood interventions that help reduce their overreliance on the forest for survival.

Below are projects pursued in 2022 in the Atewa Forest Landscape.



ECONOBIO II. French Development Agency (AFD) through Noé

This project is contributing to the development of sustainable economic sectors and improving biodiversity conservation and sustainable use of natural resources by communities. Sustainability of the model is secured by strengthening the civil society players and by capitalizing and disseminating the project lessons learnt. These activities are complemented by the development of several high-end green commodity value chains.





Atewa Critical Conservation Action Programme (ACCAP). A.G. Leventis Foundation

The ACCAP project is driving the Atewa Range Forest Reserve towards one goal – securing the long-term integrity of the forest by engaging in local and international campaigns advocating for the protection of Atewa against government’s plans to mine bauxite in it. The project is also tackling the ongoing degradation and encroachment from illegal logging, hunting, farming, and small-scale gold mining. Central to this is our work with the forest edge communities to build institutions – Community Resource Management Areas (CREMAs) – that empower them to take responsibility for their own natural resources.



Safeguarding the world's most trafficked mammal: Surveying and tracking White-bellied Pangolins to strengthen conservation decision-making and improve Pangolin survival. Mohamed bin Zayed Species Conservation Fund (MBZ)

This project is safeguarding the world's most trafficked mammal, the White-bellied Pangolins, by training local communities to survey and track the species to strengthen conservation decision-making and improve Pangolin survival. A Pangolin rehabilitation centre has been set up at the A Rocha Kyebi Office for rehabilitation of rescued Pangolins before they are re-introduced into the wild.



Digitizing Data for African Landscapes – GBIF, BID and JRS Biodiversity Foundation

A Rocha Ghana together with 10 other organisations from across Africa worked to digitize, share and use data to help the conservation of four forested African landscapes. This has been made possible under a Global Biodiversity Information Facility (GBIF) project dubbed, "Digitizing Data for African Landscapes." Also, as part of the project, partners and stakeholders in the biodiversity conservation space were trained in biodiversity data mobilisation and publication. Through this project, datasets on mammals, birds, trees and butterflies in the Atewa Range Forest Reserve have been published. These datasets are expected to be used in powerful ways for biodiversity conservation including planning and development decisions, research, education, tourism, fundraising and reporting.



Protecting Atewa Critical Ecosystem through Biodiversity Assessments and Participatory Monitoring. Critical Ecosystem Partnership Fund (CEPF)

The project was aimed at protecting the biologically rich Atewa Range Forest Reserve from current threats of illegal mining, the government's intended bauxite mining plan and other forms of degradation. This was done through regular community monitoring and reporting of illegal and damaging activities using the Spatial Monitoring and Reporting Tool (SMART); and assessing its biodiversity using the environmental DNA (Edna) and field validations to confirm Atewa's Key Biodiversity Area status.



For community and environmental rights at the intersection of mining and climate risks in the Atewa Landscape, Eastern Ghana. Ford Foundation

This project is raising communities' awareness of the threats to their environmental rights, especially to clean water, posed by the government's planned bauxite mining in the Atewa forest. This aims to garner their support for advocacy against the bauxite plans. We are also supporting communities to prepare land valuation maps to input into local government's integrated land use planning processes to ensure their concerns are included. Communities are also being trained in conflict resolution and management to minimise the risk of resource conflicts. Finally, tree planting to restore areas of damaged forest is also being implemented.



02.3

A photograph of a savanna landscape. In the foreground, there is a dead, bleached tree with many thin, bare branches. The ground is covered in green grass and low-lying vegetation. In the background, there are lush green trees and a hazy sky. On the right side of the image, the back and tail of an elephant are visible, partially cut off by the edge of the frame.

Mole Ecological Landscape

The Mole Ecological Landscape (MEL) is a prime example of Ghana's Shea Savannah Landscape's extraordinarily rich environment and diversified wildlife. The Mole National Park (MNP), which is located within MEL, is Ghana's largest national park (4,577 km²) and a model for nature preservation, ecotourism promotion, and the preservation and study of historical and cultural heritage. For almost two decades, A Rocha Ghana has worked assiduously to ensure the natural integrity of the landscape is preserved and that communities are able to live in harmony with nature.





ECONOBIO II: Development of green value chains for the benefit of local populations living on the outskirts of biodiversity-rich areas, with the support of the private sector and civil society. French Development Agency (AFD) through Noé

Similar to ECONOBIO II's activities in the Atewa Forest Landscape, the project is focussed on Shea and Honey Value Chains and on protection of biodiversity in the Mole Ecological Landscape. In 2022, the Sunkpa Shea Women's Cooperative – one of our partner cooperatives on the ECONOBIO programmes and other projects – won the prestigious Equator Prize for their achievements in sustainable landscape management and green value chain development.

Forest Landscape Restoration through a Sustainable Wood Energy Value Chain. The German Ministry of Environment (BMUV) through the Deutsche Gesellschaft für Internationale Zusammenarbeit (GIZ) and the International Union for Conservation of Nature, Netherlands (IUCN NL)

Through the sustainable production and efficient use of energy wood, forests in selected regions in Ghana are being preserved and restored, thus contributing to the implementation of the national climate policy and to the improvement of the framework conditions for sustainable forest management and energy supply.





Creating lands of Opportunities: Transforming livelihoods through landscape restoration in the Sahel, United Nations Convention to Combat Desertification (UNCCD). Global Mechanism (GM) through the Italian Ministry of Ecological Transition (MiTE)

This programme is making significant and sustainable contributions towards landscape restoration in the Sahel while creating income-generating activities for local communities in Burkina Faso, Ghana and Niger. A Rocha Ghana has been directly implementing the renewable energy component of this project.

Mole Organic Landscape Enterprise (MOLE) Project. OM4D, African Tiger Holding Limited

The project is creating an organic agribusiness value chain to improve the livelihoods and biodiversity conservation of communities fringing Mole National Park.



Mobilizing More for Climate (MoMo4C). Netherlands Ministry of Foreign Affairs through IUCN Netherlands

By bringing together entrepreneurs, firms, policymakers, investors and civil society organizations, this project is making green business propositions that tackle the impacts and causes of climate change at a landscape level in developing countries, and attracting investments to implement these green initiatives.

Ghana Shea Landscape Emissions Reduction Project (GSLERP). Green Climate Fund through Global Shea Alliance (GSA)

With private sector partnership and matching funds from Savannah Fruits Company (SFC), the project seeks to restore and sustainably manage shea parklands and strengthen value chains for shea processing and marketing.



Shea More. SSI, Global Shea Alliance (GSA) and Evolution of Smooth (EOS)

This project is supporting eight Women Shea Cooperatives (565 members) with beekeeping and soap making skills as additional livelihoods for improved incomes.

02.4

Mangrove Landscapes

A Rocha Ghana works in two major Ramsar Sites — Muni–Pomadze Ramsar site and the Keta Lagoon Complex Ramsar Site to ensure the continuous protection of these ecosystems.

Muni–Pomadze Ramsar site is located in the Central Region of Ghana and comprises of the Muni Lagoon, the Yenku Forest Reserve, the surrounding flood plains and the adjacent sandy beach on the seafront. Keta Lagoon Complex Ramsar Site, covers part of the Volta River estuary. It comprises several small islands and a complex of lagoons with varying salinity. The dominant vegetation includes swamps, scrublands, and mangrove forests, which are heavily exploited by resident communities for fuel woods and commercial fishing.



PAPBio Project, European Union through IUCN.

Project Title: Promoting Conservation, Pro-Conservation Livelihoods and Community Based Management of Mangrove Ecosystems in the Southwestern End (Anyanui-Bomigo) of the Keta-Lagoon Complex Ramsar Site Area, Ghana. This project is contributing to both national and international efforts to manage and protect mangrove ecosystems for sustainable coastal marine resources and human wellbeing.



PISCCA Project, Embassy of France in Ghana

Project title: Local Governance and Nature-based Solutions Nexus for Enhanced Landscape, Species and Human Wellbeing in the Muni-Pomadze Ramsar Site, Winneba, Ghana

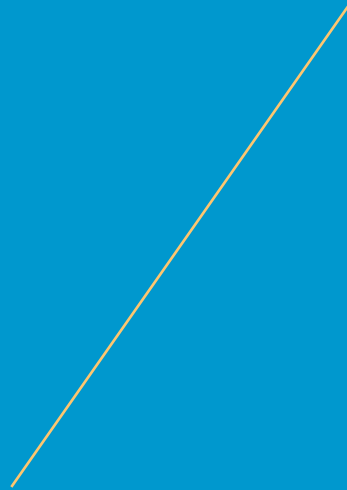
This project is enhancing the climate resilience of the coastal marine landscape of Muni-Pomadze and strengthening its capacity to deliver ecosystem services crucial to the wellness of habitats, species and people in the landscape.

Farmers have been trained in best farming practices and the application of bio-pesticides and fertilizers, and about 4000 tree seedlings have been planted to restore degraded areas within the Ramsar site.





03





Other Interventions

03.1



Corporate Engagement

A Rocha Ghana through our Corporate Engagement activities is helping businesses understand the value of nature and become more environmentally sustainable.

Businesses in Environmental Stewardship Network (BESNet)

The Businesses in Environmental Stewardship Network (BESNet) now has a registered membership of 34 businesses, and over 20 additional businesses working with those we have engaged through BESNet. Through BESNet, we partnered with Ghana's Environmental Protection Agency (EPA) and other organisations to run educational workshops for businesses on sustainability and compliance to Environmental Standards and Regulations. There has also been a training on natural capital and its linkages with business decision making and risks management.



Ghana's Voluntary National Review of the SDGs

Crucial to the attainment of the Sustainable Development Goals (SDGs) at the national level is the existence of regular voluntary national reviews (VNR) in which the private sector should be a key stakeholder, but its potential contribution is often overlooked. Partnering with IUCN Ghana and the National Development Planning Commission (NDPC), we created a platform to introduce the private sector to the VNR and held discussions on how the sector can collate and document the actions it is taking to contribute to the SDGs at national and sub-national levels.



Universal Periodic Review of Ghana by the UN Human Rights Council

We worked with a group of CSOs within the Natural Resources and Environment Sector to prepare and submit a report on **Business and Human Rights** to the 4th Cycle Universal Periodic Review (UPR) mechanism of the United Nations. Ghana's review took place in late January 2023.



03.2



Creation Care and Interfaith Interventions

Caring for God's creation has been our mantra from our very inception. Over the years we have helped people of faith to connect their theological teachings and belief systems with positive environmental actions. We do this with a focus on seven thematic areas: Faith Consistent Use of Asset, Education, Wisdom, Lifestyle, Media and Advocacy, Partnership and Celebration.

We keep supporting faith-based institutions and leaders to advocate for a clean environment within their community and beyond.

Church Engagement and Education

In 2022, we created the platform to educate the Christian community on the need to care for God's creation using biblical references and practical actions.

- Teaching from the Pulpit: We spoke on the theme 'The Christian and The Environment' in two churches (Emmanuel Presbyterian Church and Evangelical Presbyterian Church) during their Sunday Services.
- Two workshops for church pastors and leaders to learn the Theological Basis for Creation Care and Practical Action.



Faith in Action

This is the practical environmental action by the churches we engage. We distributed over 150 tree seedlings to churches on Sundays to share with their congregations for planting. They were also given free reusable shopping bags as a substitute for single-use plastic bags.



Plastic Recovery Action

We helped the Presbyterian Church of Ghana enroll their entire 40 Districts in Accra in the plastic recovery program. So far, 10 of the districts have received wire-mesh receptacles which are currently placed at their church premises to recover plastics. Members bring their plastics from their homes and within the community to the church. These plastic wastes are later collected by a plastic recycling company. About 6000kg of plastics that would have otherwise gone to the landfill or blocked waterways are recovered every month and recycled. This intervention has been extended to the Muslim community.





The Eco Church Program

In 2022 we instituted the Eco Church reward scheme which is designed to assist churches that want to demonstrate their care for God's creation by performing simple environmental tasks that earn them points for recognition. So far, six local churches have signed on to the program. Umbrella churches such as The Methodist Church Ghana, Presbyterian Church Ghana, and E.P Church Ghana have indicated their approval for the programmes.



A Rocha Ghana and Akrofi-Christaller Institute Partner to Protect the Environment

A Rocha Ghana (ARG) in partnership with the Akrofi-Christaller Institute of Theology, Mission and Culture (ACI) has initiated a programme to teach and inspire clergy and lay church leaders to care for the natural environment. The programme dubbed "Creation Care Theological Education Programme" provides support and creates awareness to enhance the knowledge of creation care studies and its practice in an African context.



Interfaith Education

The creation care interfaith programme utilizes the caring for creation teachings found within the fabric of faith of both Christians and Muslims to raise environmental awareness and at the same time a platform to build and sustain peace within communities.

1. Interfaith for Plastic Recovery Programme: we were able to setup a plastic receptacle within the premises of mosques and churches to recover plastics. This also offered us the opportunity to unite interfaith leadership and followers within these communities under Interfaith for Environment forums to dialogue on environmental issues. These educational programmes have benefited hundreds of people in the Muslim communities.
2. It has become a practice of the Ahmadiyya Muslim Mission to have a total waste separation during their annual national conference. They recover over 3000kg of plastics during these conferences.
3. Ahmadiyya Muslim Television: The programme seeks to educate the Muslim communities especially viewers of Muslim Television Ahmadiyya on environmental consciousness and practical environmental conservation. We have been able to highlight the importance of wetlands such as the Sakumo Ramsar Site and filmed the adoption and planting of over 3,000 trees at the Shai Hills Forest Reserve.



03.3



Environmental Education

Through our Environmental Education (EE) activities, we enable people of all ages to develop their knowledge, understanding and connection to the environment and their impact on it; encourage sensitivity to environmental issues and challenges and make informed and responsible decisions at the individual, community and organizational level.

Schools

At A Rocha Ghana, we continue to engage school-going age children and the youth on issues of environmental concern both locally and globally.

Our schools' conservation education programme is focused on imparting knowledge to students with the aid of their teachers and parents to explore their environment to make effective contributions in identifying and mobilising themselves to address environmental problems within their schools and communities.

Let us explore some of the achievements for 2022 including workshops, teacher training, environmental clubs and school visits.

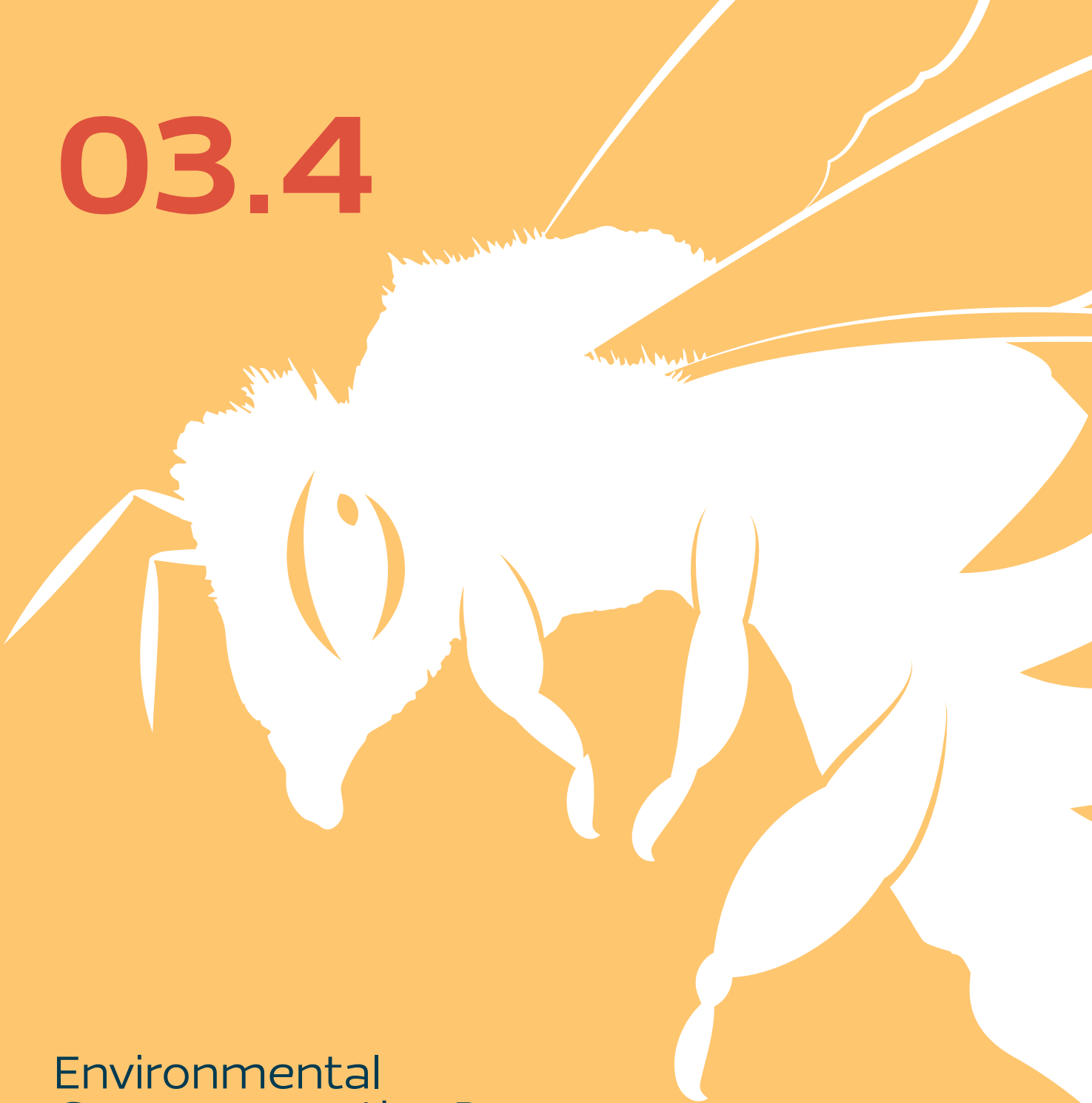
- Students of Awoshie Islamic School engaged in a tree planting and aftercare exercise to celebrate #GreenGhana day.
- Over 200 Pupils from the Abuakwa South Municipality had an educational tour of the Atewa Range Forest Reserve.
- A 4-week environmental summer class with VLSC Education Centre educated students aged 4-14 on different environmental topics and activities including climate change, SDGs, deforestation and pollution.



A Rocha KNUST

A Rocha KNUST is A Rocha Ghana's tertiary students' wing located at the Faculty of Renewable Natural Resources, Kwame Nkrumah University of Science and Technology (KNUST). The group is one of the leading tertiary students' associations in Ghana dedicated to conservation efforts. For over a decade, the association has served as a training and exposure platform to several Ghanaian renowned conservationists. Currently standing with a membership of 352 students, the group with guidance from A Rocha Ghana continues to engage in activities that inure to the benefit of nature.

03.4



Environmental Commemorative Days

Consistently for the past four years, we have taken time and resources to highlight some major environmental commemorative days. More often, we partner with organisations to get these days running.

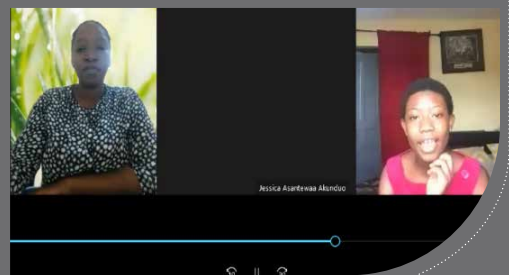
World Pangolin Day: We raise awareness annually on Pangolins, the threats they face, and their need for stronger protection. In 2022, we partnered with WABiLED/USAID, Ghana Wildlife Division, and Pangolin-GH for a week of advocacy, and distributed our awareness poster educating people (especially in hotspot areas) on what to do if they find a Pangolin outside its natural habitat. We also now have an exhibit on Pangolins in the Museum of Science and Technology to educate visitors on Pangolins and their need for protection.



World Environment Day Essay Contest: On World Environment Day 2022, we together with our partners, Open Foundation West Africa and GH Environment, launched a nationwide essay competition for children from the ages of 6 to 16 years. Anchoring on the 2022 theme #OnlyOneEarth, we asked Ghana's young people to tell us how they would take care of our One Earth to ensure we humans live in harmony with nature.



International Youth Day: We partnered with Youth Alliance for Green Ghana (YAGG) and Eco-Conscious Citizens to host a webinar exploring the nexus between Ghanaian elders and the youth in addressing issues such as ageism, intergenerational inequalities and environmental degradation. A press release calling for an Intergenerational Policy and Legal Framework for Ghana was published.



Thick, Tall Trees

Dedicated to the magnificent Atewa Range Forest Reserve, the children's book 'Thick Tall Trees' instills a love for forests and a desire to protect them.

Since 2021, A Rocha Ghana has distributed over 1000 copies of 'Thick, Tall Trees' to schools around the country. Helping the next generation care for creation is how we create long-term change #ForNature.



Book Exchange Booth

The Book Exchange Booth in partnership with Open Foundation Africa, Goethe Institute Ghana, EPP Book Shop and ARA Children shop established a stationed booth at the Achimota children's playground where young people can donate their books and swap them for others. This is to encourage sharing old books among children and the youth while maintaining an environmentally friendly way of reuse. 50 copies of A Rocha Ghana's children's book 'Thick, Tall Trees' were amongst the books donated.



04

Each year, A Rocha Ghana reviews the government's development priorities outlined in its national budget for the coming year. We focus on the sectors that will affect nature and people's environmental rights, and assess them for their impacts and dependencies on ecosystem services such as food, clean water, carbon sequestration and storage, erosion prevention, pollination, habitats for species, recreation, and mental and physical health. We score each sector according to its impacts and dependencies to get an overview of how damaging or beneficial the sector may be for people and the environment. The review also advises on how government can strengthen the sustainability of its programmes for people and nature.

SCAN TO READ THE
FULL REVIEW



Major Publication



OES



Atewa Forest

Atewa Forest – Ghana's crown jewel for water and biodiversity – is under severe threat. The forest is a unique highly biodiverse upland evergreen forest providing habitats for many endemic and endangered species, and critical ecosystem services for local communities, especially clean water and climate change resilience. Although the forest is legally protected, government announced plans in 2017 to strip-mine bauxite on the forested mountaintops, threatening the clean water source of 5 million people. With illegal gold mining already damaging communities' water sources, bauxite mining will be another nail in the coffin of the forest's water provision services.

This is why for a decade A Rocha Ghana has been campaigning for an upgrade to Atewa's protection status from Protected Forest Reserve to National Park. In 2017, the campaign was forced to step-up and vehemently oppose the bauxite mining plans. Many stakeholders are involved. Atewa's communities walked 95km from their forest home to Accra symbolically →



Our biggest and longest Campaign

→ delivering Atewa's water to Ghana's government, while A Rocha Ghana has sought global support from NGOs, private sector, and citizens to collectively 'say no' to bauxite mining in Atewa. Global petitions, press conferences, letters from aluminium user companies, a Motion to the IUCN, and now a court case in Ghana's Supreme Court are amongst the many actions demanding government rescinds its bauxite mining plans.

We are also suggesting solutions – green development alternatives – that will protect the Atewa Forest while providing clean green rewarding jobs for local communities. These include green value chains for cocoa, voacanga, Aframomum (grains of paradise) and avocado; and ecotourism with walks in the forest, nights sleeping in the treetops, and the chance to see the world's most trafficked mammal – the Pangolin – for real in the forest. Other options include carbon credit payments through emissions reduction projects with local communities. We need to keep the shade provided by Atewa Forest for water, wild animals and climate services intact today for generations tomorrow.

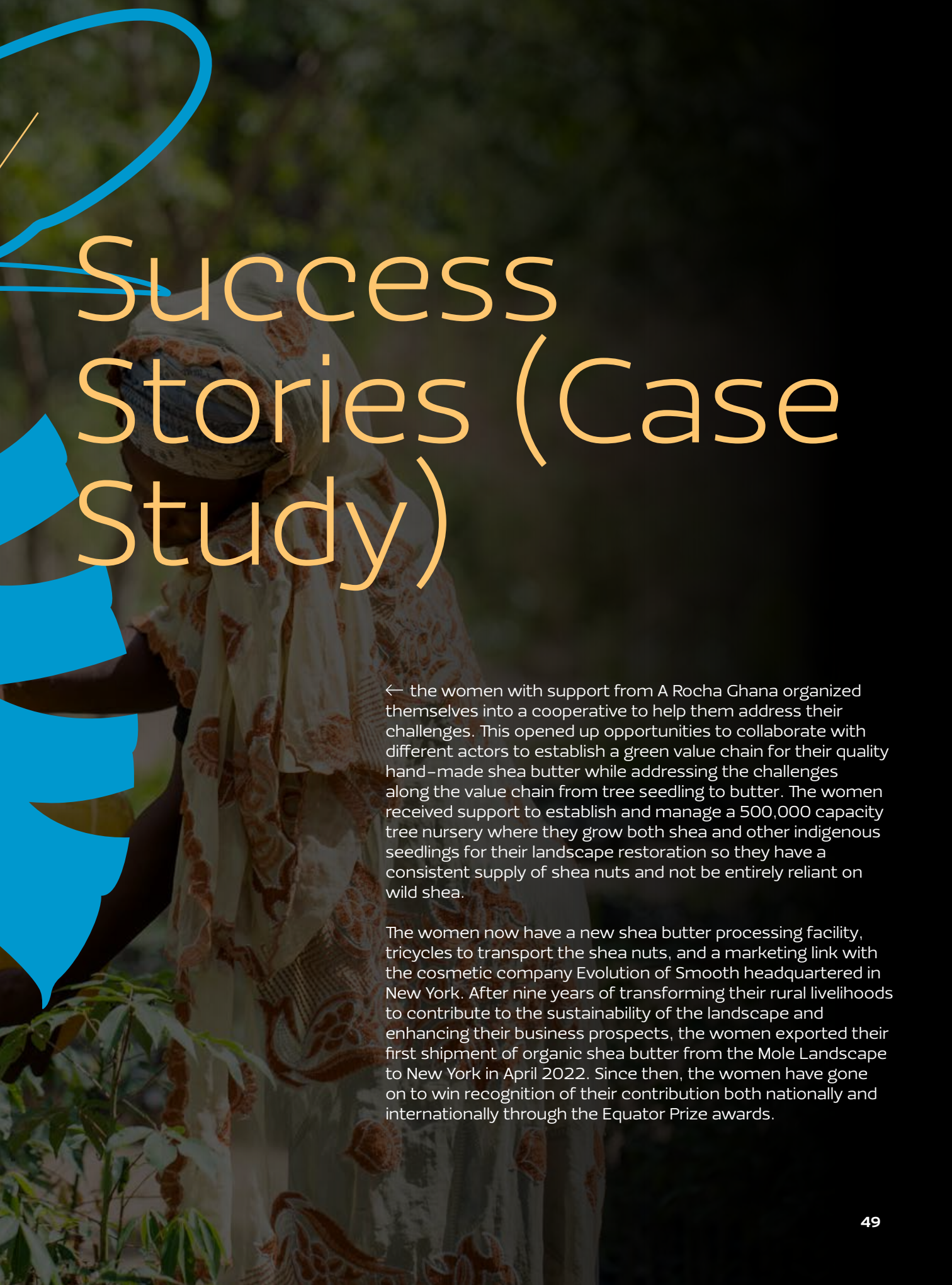
In 2023 we are continuing the campaign against government's plans and demand National Park status for the forest so we can be sure it remains intact for both nature and people long into the future.

0066

From Rural Landscapes of Mole to New York

Sunkpa Shea Women in the Mole Ecological Landscape is a group of women making sustainable changes to the Mole Landscape through restoration and green value chain development in their shea nut collecting and butter processing livelihoods.

Back in 2013, the women would walk many miles collecting shea nuts to sell on local markets or process into butter by hand for local sale. It was hard work and they faced other challenges too: they were not achieving premium prices for their handmade shea butter, they lacked transport to move the nuts from the wild to a processing centre, they lacked access to consistent markets, and the local charcoal producers were felling the shea trees that their livelihoods depended on. Through the Community Resource Management Area (CREMA), →



Success Stories (Case Study)

← the women with support from A Rocha Ghana organized themselves into a cooperative to help them address their challenges. This opened up opportunities to collaborate with different actors to establish a green value chain for their quality hand-made shea butter while addressing the challenges along the value chain from tree seedling to butter. The women received support to establish and manage a 500,000 capacity tree nursery where they grow both shea and other indigenous seedlings for their landscape restoration so they have a consistent supply of shea nuts and not be entirely reliant on wild shea.

The women now have a new shea butter processing facility, tricycles to transport the shea nuts, and a marketing link with the cosmetic company Evolution of Smooth headquartered in New York. After nine years of transforming their rural livelihoods to contribute to the sustainability of the landscape and enhancing their business prospects, the women exported their first shipment of organic shea butter from the Mole Landscape to New York in April 2022. Since then, the women have gone on to win recognition of their contribution both nationally and internationally through the Equator Prize awards.

07

Communication remains an important facet of the day-to-day running of our organisation and over the years we have learnt that effective communication involves knowing our audience, how best to reach them and how to tailor our message so they can understand and act.

We have engaged our audience through various means and channels making them a part of our success story.



Website

A visit to our website will give you first-hand information on most of the work we are doing to care for creation. Our projects and programmes are well highlighted and all our intriguing stories carefully displayed. Visit us at <https://ghana.arochoa.org/>



Newsletter subscription

There is a lot to learn about us when you subscribe to our newsletters. Our quarterly newsletter brings to the fore important activities we have carried out and keeps subscribers updated with news and links to resources and publications. Sign up at <https://ghana.arochoa.org/newsletter/>

Connecting With Rest Of The World



Social media

Millions of people can now be found on various social media platforms and so we have banked on this to reach the rest of the world and let them know the efforts being made to ensure the environment is preserved for generations to come.



08



Nursery seedlings raised

1,179,100



Number of trees planted

1,172,200



Degraded areas restored (hectares)

1,986.31



Livelihoods improved

5,454



Communities supported

89

Metrics: From when ARG was founded to date



Number of women empowered

7,676



Number of youths empowered

5,750



Businesses engaged

70



Number of schools engaged

131



Number of faith-based organisations we work with

82

09

Our funders,
supporters
and partners
over the
years

Long term
Partner:



A ROCHA







Our Contact

Head Office

A Rocha Ghana
4 Sabblah Link
North-Legon, Accra

P.O. Box KN 3480
Kaneshie- Accra
Digital Address:
GE 215-5083

Tel: +233 (0) 302 546 172
Email: ghana@arocha.org
Web: www.ghana.arocha.org

Field Offices

Mole Ecological Landscape

P.O. Box UD 61,
Damongo-Savannah Region
Digital Address: N5-00004-0319
Tel: +233 2467 22625
+233 3025 46172

Lake Bosomtwe Landscape

P.O. Box UP 1077,
KNUST- Kumasi, Ghana
Digital Address: AB-0458-2306
Tel: +233 3220 60850
+233 2082 76858

Atewa Forest Landscape

P. O. Box KY 90 Kibi,
Eastern Region
Digital Address: EE-0013-2852
Tel: +233 3025 46172

Social Media

 A Rocha Ghana  @Arochaghana  @Arochaghana_Official  A Rocha Ghana  A Rocha Ghana